

INSTRUCTIONS FOR BATTERY REPLACEMENT

Venus UPS - Models 600VA & 800VA

**PLEASE FOLLOW THESE INSTRUCTIONS CAREFULLY
TO AVOID INJURY OR DAMAGE TO THE UNIT**

IMPORTANT: Before replacing the battery, turn off the
UPS and unplug the UPS cord from the wall outlet.

What's in the box:

- Battery
- Instructions

- 1 Turn the UPS upside down
- 2 Unscrew all 4 screws located at the base of the UPS with a screwdriver. Make sure you loosen up all screws before going to step 3.



Photo 1

03/01/17 70526

INSTRUCTIONS FOR BATTERY REPLACEMENT

- 3 Turn the UPS down side up and shake all 4 screws off.
- 4 Pull top cover up about 1.5 inches from the back. Then pull front panel up slightly and separate from chassis as shown below.



Photo 2

- 5 Turn top cover on the side as shown in photo 3.



Photo 3

INSTRUCTIONS FOR BATTERY REPLACEMENT

- 6 Unplug the red wire first by pulling it from the red terminal, then the black one.



Photo 4

- 7 Unscrew the bracket covering the battery with a screwdriver as shown on photo 5.

WARNING: Do not make any contact with the battery terminals with the screwdriver or any other metal materials like watches, rings, etc. Electric shock could occur and it could cause harm to you and the battery.

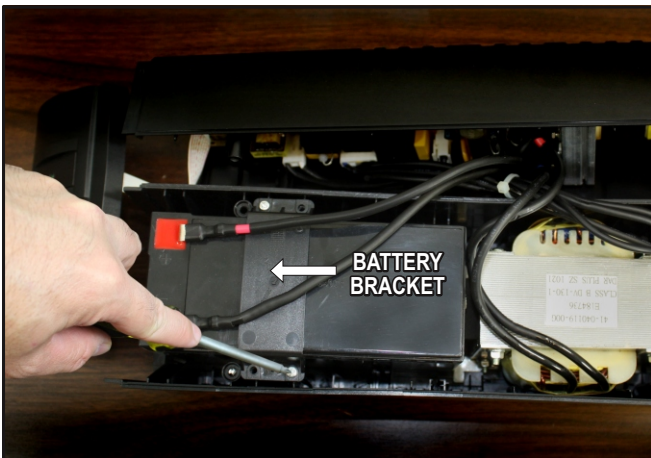


Photo 5

INSTRUCTIONS FOR BATTERY REPLACEMENT

- 8 Remove the battery by pulling up. It should slide out easily.

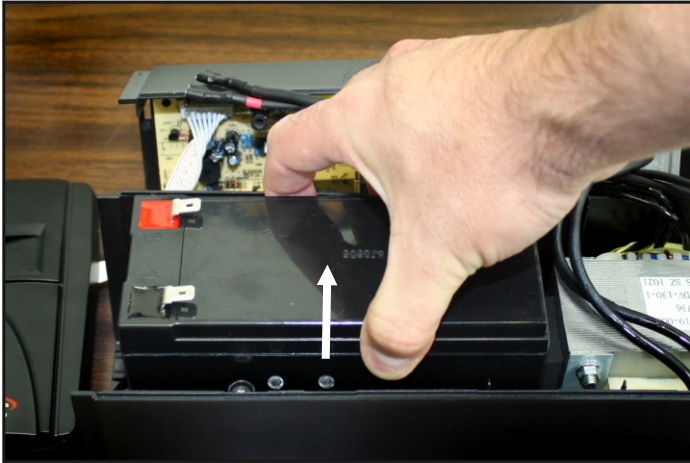


Photo 6

- 9 Place new battery in by making sure the terminals are facing as shown on photo 6. The battery should slide in and fit comfortably in its place.
- 10 Screw cover bracket back on as shown on Photo 7. There is only one screw for each side. Make sure the bracket sits on top of the holes as shown on photo 7b.

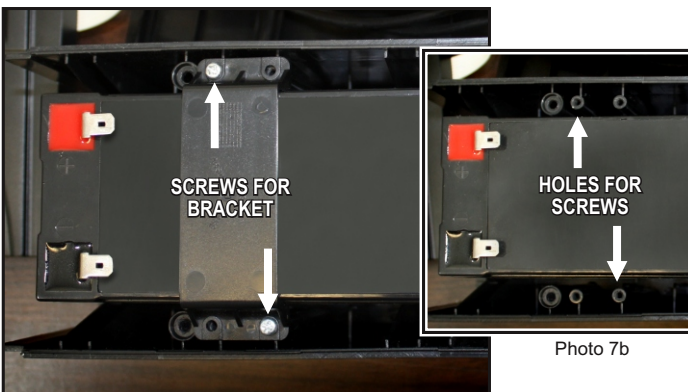


Photo 7

INSTRUCTIONS FOR BATTERY REPLACEMENT

- 11 Connect the black wire first to the black terminal then, the red wire to the red terminal.



Photo 8

- 12 Put top cover back as shown on photo 9. Make sure there are no wires coming out when putting top cover back on.



Photo 9

INSTRUCTIONS FOR BATTERY REPLACEMENT

- 13** Connect the top of the front panel into the holes on the top cover and push towards chassis.



Photo 10



Photo 10b

- 14** Push down the top cover together with the chassis and snap the front panel in place completely, as shown below.



Photo 11

INSTRUCTIONS FOR BATTERY REPLACEMENT

- 15** Hold all panels together tightly and turn UPS upside down.



Photo 12

- 16** Drop screws inside hole making sure the head of the screw is up. Screw all 4 screws back in until tight.

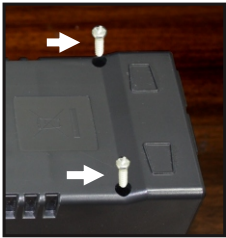


Photo 13

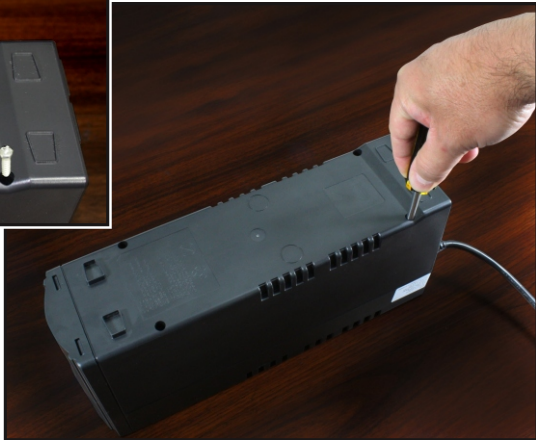


Photo 13b

- 17 Test the UPS by pressing the button and making sure the "Protected" green LED comes on (LED model) or the LCD diagnostic display comes on (LCD model). Turn UPS off by pressing the button again.



Photo 14 - LED Model



Photo 14b - LCD Model

- 18 Finally, plug all your equipment back to the UPS and turn UPS on by pressing the button.
- 19 Recycle the used battery:

- Never dispose the batteries in a fire. It may explode.
- Do not open or mutilate the batteries. Released electrolyte is harmful to the skins and eyes. It may be toxic. A battery can present a risk of electrical shock and high short circuit current.

To recycle properly the used battery, please do not discard the battery into the trash bin. Please follow your local laws and regulations; you may contact your local recycling waste center for further information to dispose of it properly.



A POWER QUALITY COMPANY

1760 Stebbins Drive - Houston, Texas 77043

Tel:800-882-8285 - Fax:(713)984-0841

E-mail: support@smartpowersystems.com

www.smartpowersystems.com

