

# Instructions for Battery Replacement

## Models:

**SBP450U Plus-T , SBP650U Plus-T , SBP800U Plus-T ,  
SBP1000U Plus-T , SBP1500U Plus-T**

### REPLACING THE BATTERY (1000VA/1500VA only)

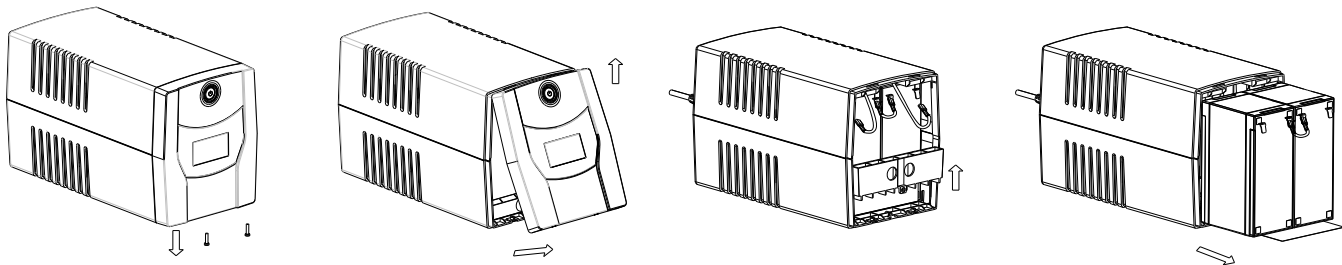
Replacement of batteries located in an OPERATOR ACCESS AREA.

1. When replacing batteries, replace with the same number of the battery .
2. CAUTION! Risk of Energy Hazard! Before replacing batteries, remove conductive jewelry such as chains, wrist watches, and rings. High energy conducted through these materials could cause severe burns.
3. CAUTION! Do not dispose of batteries in a fire. The batteries may explode .
4. CAUTION! Do not open or mutilate batteries. Released material is harmful to the skin and eyes .It may be toxic.
5. CAUTION! A battery can present a risk of electrical shock and high short circuit current .The following precautions should be observed when working on batteries:
  - 1) Remove watches rings, or other metal objects.
  - 2) Use tools with insulated handles.

CAUTION - RISK OF EXPLOSION IF BATTERY IS REPLACED BY AN INCORRECT TYPE. DISPOSE OF USED BATTERIES ACCORDING TO LOCAL REGULATIONS.

### BATTERY REPLACEMENT PROCEDURE

1. Turn off and unplug all connected equipment.
2. Turn the UPS off and unplug it from the AC power source.
3. Turn the UPS on its side.
4. Remove the screws on the bottom of the front panel and lay aside .
5. Remove the front panel of the UPS: pull and lift it.
6. Take out the battery compartment cover.
7. Disconnect the battery wires from the battery.
8. Remove the battery from the compartment.
9. Put the battery back into the compartment.
10. Install the replacement battery by connecting the red wire (+) and black wire (-) to the same color connectors from the battery pack.
11. Take in the battery compartment cover.



REMINDER: Batteries are considered HAZARDOUS WASTE and must be disposed of properly. Most retailers that sell lead-acid batteries collect used batteries for recycling, as required by local regulations.